

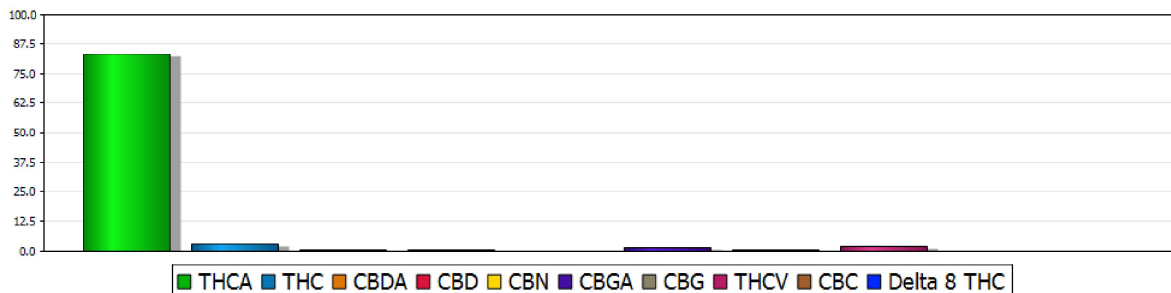


620 E Whitney Ave.  
Anchorage, AK 99501  
Phone: 907-258-6878



**Sample ID:** 66900  
**Company:** Green Growcer  
**Manifest #:** 1837724  
**Package / Source IDs:** 1A402030000BB1D000000590 / 1A402030000BB1D000000589  
**Date Received:** 2021-09-30

**Matrix:** Concentrate **Description:** DB-1-18  
**Date of Report:** 2021 - 10 - 05 **Delivered By:** Hyon Yun **Time Delivered:** 4 pm  
**Chain of Custody:** Subcontractor: None MRL = Method Reporting Limit



<b>Total THC %:</b> 75.44	<b>Total CBD %:</b> 0.45	<b>Total Cannabinoid %:</b> 89.55
---------------------------	--------------------------	-----------------------------------

<b>THCA %:</b> 83.13	<b>CBDA %:</b> 0.31
<b>THC %:</b> 2.54	<b>CBD %:</b> < 0.20
<b>CBN %:</b> < 0.07	<b>THCV %:</b> 1.77
<b>CBG %:</b> 0.27	<b>D-8 THC %:</b> 0.00
<b>THCA MRL = 0.29%</b>	<b>CBDA MRL = 0.24%</b>
<b>THC MRL = 0.44%</b>	<b>CBD MRL = 0.20%</b>
<b>CBN MRL = 0.07%</b>	<b>TM: SOP501 V3.2</b>

**TERPENES RESULTS**

<b>Alpha Pinene %:</b> 0.24	<b>Beta Pinene %:</b> 0.25	<b>Beta Myrcene %:</b> 1.37
<b>Camphene %:</b> 0.02	<b>Delta 3 Carene %:</b> 0.08	<b>A-Terpinene %:</b> 0.02
<b>P Cymene %:</b> 0.1	<b>Limonene %:</b> 0.34	<b>Ocimene %:</b> 0.3
<b>G-Terpinene %:</b> 0.02	<b>Terpinolene %:</b> 0.88	<b>Linalool %:</b> 0.09
<b>Isopulegol %:</b> 0	<b>Geraniol %:</b> 0.02	<b>B-Caryophyllene %:</b> 0.15
<b>A-Humulene %:</b> 0.03	<b>Nerolidol 1 %:</b> 0.03	<b>Total Terpenes %:</b> 3.98
<b>Alpha Bisabolol %:</b> 0.03	<b>Guaiol %:</b> 0.01	

**RESIDUAL SOLVENTS RESULTS:** Test Method: SOP521 V4.3

<b>Overall Result:</b> Passed		
<b>Butane PPM:</b> 5.62	Passed	<b>Hexane PPM:</b> BTL Passed
<b>Benzene PPM:</b> BTL	Passed	<b>Heptane PPM:</b> BTL Passed
		<b>Xylenes PPM:</b> BTL Passed

**MICROBIAL RESULTS** Test Method: SOP511 V2.6

**Overall Results:** N/A

**Observations:**

